

# Fortress® AL13+ Railing Overview



Use the steps below for the following pages to complete your rail

**STEP 1** Choose Panel  
Glass Options Available  
See Pages 212 - 219

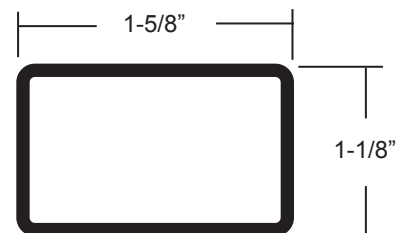
**STEP 3** Choose post  
Surface or Fascia Mount

**STEP 2** Choose Brackets (4 Pack)

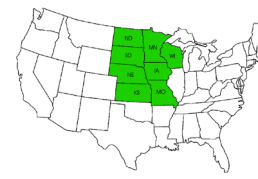
**STEP 4** Select a Post Cap

## Fortress® Aluminum Railing System

Fortress AL13+ railing system features fully pre-welded aluminum rails, distinctly different from aluminum kits. Panels install easily with a simple bracket system. Aluminum construction and a premium powder coating create a virtually maintenance free system designed for use in a variety of environments. Rail panels can be used as a complete system or they can be installed between existing posts.



Top Rail Profile



**ACTUAL FREIGHT CHARGES APPLY TO FORTRESS® RAIL ORDERS**



Fortress® Aluminum Rail - White

**Fortress® Al<sup>13+</sup> Welded Aluminum Panels**



Top / bottom rail measure 1-5/8" x 1" and Infill balusters are 3/4" square for both level and stair panels.

Available in:

- White
- Black Sand

**6' - Al<sup>13+</sup> Traditional Aluminum Panel**

**Sold in any quantity**

34" x 69" Fortress Al<sup>13</sup> welded aluminum panel achieves a total railing height of 36". 40" x 69" Fortress Al<sup>13</sup> welded aluminum panel achieves a total railing height of 42." **Brackets sold separately, see next page.**

**36" Rail Height** (34" x 69" Panel)

**42" Rail Height** (40" x 69" Panel)

Item # **51134691** - White

Item # **51134698** - Black Sand (Txt)

Item # **51140691** - White

Item # **51140698** - Black Sand (Txt)

**8' - Al<sup>13+</sup> Traditional Aluminum Panel**

**Sold in any quantity**

34" x 93" Fortress Al<sup>13+</sup> welded aluminum panel achieves a total railing height of 36". 40" x 93" Fortress Al<sup>13+</sup> welded aluminum panel achieves a total railing height of 42." **Brackets sold separately, see next page.**

**36" Rail Height** (34" x 93" Panel)

**42" Rail Height** (40" x 93" Panel)

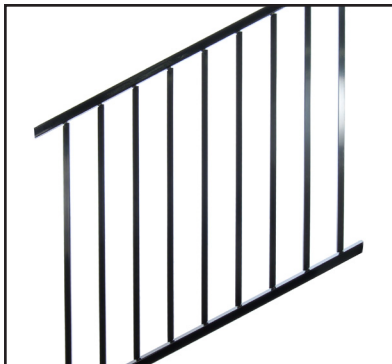
Item # **51134931** - White

Item # **51134938** - Black Sand (Txt)

Item # **51140931** - White

Item # **51140938** - Black Sand (Txt)

**Fortress® Al<sup>13+</sup> Adjustable Aluminum Stair Panels**



Available in:

- White
- Black Sand

**8' - Al<sup>13+</sup> Adjustable Stair Aluminum Panel**

**Sold in any quantity**

Fortress Al<sup>13</sup> aluminum panel for stairs and ramps, achieves a total railing height of either 36" or 42". Panel adjustable from 5° - 45°. **Brackets sold separately, see next page.**

**36" Rail Height** (34" x 93" Panel)

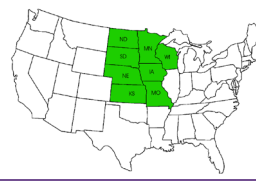
**42" Rail Height** (40" x 93" Panel)

Item # **51234721** - White

Item # **51234728** - Black Sand (Txt)

Item # **51240931** - White

Item # **51240938** - Black Sand (Txt)



**ACTUAL FREIGHT CHARGES APPLY TO FORTRESS® RAIL ORDERS**

**Fortress® AI<sup>13+</sup> Rail Brackets**



Available in:

White

Black Sand

**AI<sup>13+</sup> Evolve External Bracket - Level**

**Sold in bags of 4.**

Top and bottom rails drop into brackets for level / straight applications with a cap to cover for a finished look. Includes screws for wood and metal applications.

**Item # 51500211** - White  
**Item # 51500218** - Black Sand (Textured)



Available in:

White

Black Sand

**AI<sup>13+</sup> Evolve External Bracket - Stair**

**Sold in bags of 4.**

Top and bottom rails drop into brackets for stair applications with a cap to cover for a finished look. Adjustable up to a 55 degree angle. Includes screws for wood and metal applications.

**Item # 51500311** - White  
**Item # 51500318** - Black Sand (Textured)



Available in:

White

Black Sand

**AI<sup>13+</sup> Evolve External Bracket - Angle / Miter**

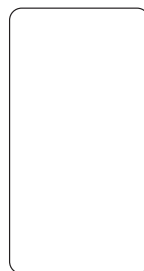
**Sold in bags of 4.**

Top and bottom rails drop into brackets for level angle/miter applications with a cap to cover for a finished look. Adjustable up to a 45 degree angle. Includes screws for wood and metal applications.

**Item # 51500411** - White  
**Item # 51500418** - Black Sand (Textured)

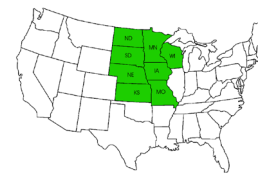


Black Sand



White

Colors shown are an approximate representation only, please see actual product sample when selecting color



**ACTUAL FREIGHT CHARGES APPLY TO FORTRESS® RAIL ORDERS**

**Fortress® Al<sup>13+</sup> Posts, Caps & Skirts**



Available in:

White

Black Sand

**Al<sup>13+</sup> - 3" Aluminum Post with 2 pc. Skirt**

**Sold in any quantity.**

3" x 39-1/2" Aluminum post with 5-1/2" welded flange used to install panels at a 36" railing height. Flange holes are 1/2" for fasteners. **Includes skirt for base.**

**Item # 51339011** - White

**Item # 59339038** - Black Sand (Textured)

3" x 45-1/2" Aluminum post with 5-1/2" welded flange used to install panels at a 42" railing height. Flange holes are 1/2" for fasteners. **Includes skirt for base.**

**Item # 51345011** - White

**Item # 59345038** - Black Sand (Textured)



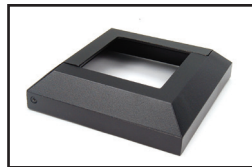
**FortressAccents 3" Post Cap**

**Sold in any quantity.**

Accents flat die cast aluminum post cap for 3" post.

**Item # 52500031** - White

**Item # 52500038** - Black Sand (Textured)



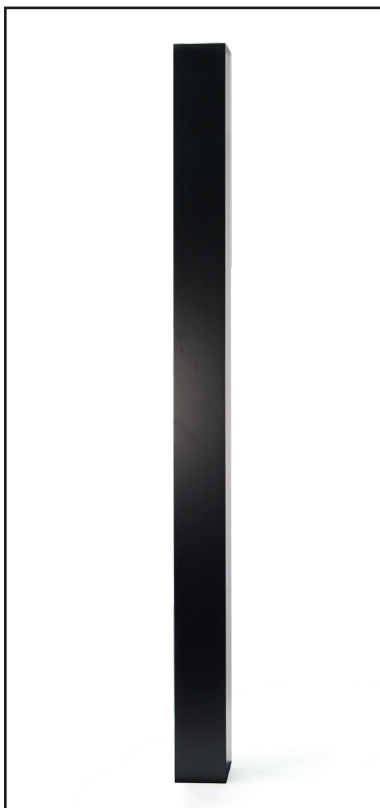
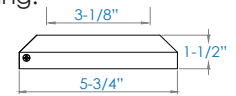
**3" Post Skirt 2 pc. - Replacement**

**Sold in any quantity.**

Al<sup>13</sup> - 5-3/4" Post base cover included. Also sold separately. Measures 5-3/4" x 1-1/2" with 3-1/8" opening.

**Item # 51500031** - White

**Item # 51500038** - Black Sand (Textured)



Available in:

White

Black Sand

**Al<sup>13+</sup> - 3" Aluminum Fascia Mount Post**

**Sold in any quantity.**

3" x 49" Aluminum post used to install panels at a 36" rail height for a fascia mount application. **Requires fascia mount brackets, see next page.**

**3" x 49" Post**

**Item # 51349021** - White

**Item # 51349028** - Black Sand (Textured)

3" x 55" Aluminum post used to install panels at a 42" rail height for a fascia mount application. **Requires fascia mount brackets, see next page.**

**3" x 55" Post**

**Item # 51355021** - White

**Item # 51355028** - Black Sand (Textured)



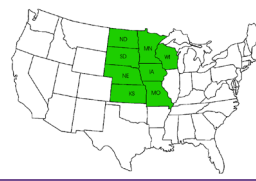
**FortressAccents 3" Post Cap**

**Sold in any quantity.**

Accents flat die cast aluminum post cap for 3" post.

**Item # 52500031** - White

**Item # 52500038** - Black Sand (Textured)



**ACTUAL FREIGHT CHARGES APPLY TO FORTRESS® RAIL ORDERS**

**Fortress® Al<sup>13+</sup> Fascia Brackets**



Available in:

- White
- Black Sand

**Fascia Mount Bracket**

**Sold in any quantity.**

Fascia mount bracket for 3" posts. Bracket offsets post 1/4" out from fascia. Includes 4 self-drilling screws & 4 hex head bolt covers. Mounting hardware not included.

**3" Fascia Bracket**

- Item # **53503001** - White
- Item # **53503008** - Black Sand (Textured)

**Replacement Hex Head Bolt Cover (4 Pack)**

- Item # **53503111** - White
- Item # **53503118** - Black Sand (Textured)



Available in:

- White
- Black Sand

**Outside Corner Fascia Mount Bracket**

**Sold in any quantity.**

Outside Corner fascia mount bracket for 3" posts. Bracket offsets post 1/4" out from fascia. Includes 4 self-drilling screws & 8 hex head bolt covers. Mounting hardware not included.

**3" Outside Corner Fascia Bracket**

- Item # **53503011** - White
- Item # **50503018** - Black Sand (Textured)

**Replacement Hex Head Bolt Cover (4 Pack)**

- Item # **53503111** - White
- Item # **53503118** - Black Sand (Textured)



Available in:

- White
- Black Sand

**Inside Corner Fascia Mount Bracket**

**Sold in any quantity.**

Inside Corner fascia mount bracket for 3" posts. Bracket offsets post 1/4" out from fascia. Includes 4 self-drilling screws & 4 hex head bolt covers. Mounting hardware not included.

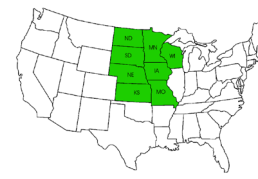
**3" Inside Corner Fascia Bracket**

- Item # **53503021** - White
- Item # **53503028** - Black Sand (Textured)

**Replacement Hex Head Bolt Cover (4 Pack)**

- Item # **53503111** - White
- Item # **53503118** - Black Sand (Textured)





**ACTUAL FREIGHT CHARGES APPLY TO FORTRESS® RAIL ORDERS**

**Fortress® Al<sup>13+</sup> Posts, Caps & Skirts**



Available in:

- White
- Black Sand

**FortressAccents™ Post Cap with Optional Light Kit**

**Sold in any quantity.**

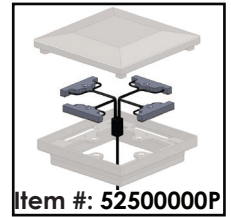
Accents flat die cast aluminum post cap for 3" post. Light kit draws **2 watts**. Light color - 2600K. Includes wire nuts and 60" lead wire. **Must purchase LED cap light kit along with cap.**

**3" Post Cap**

- Item # 52500031 - White
- Item # 52500038 - Black Sand (Textured)

**Light Kit**

- Item # 52500000P - LED Light Kit



Item #: 52500000P



Available in:

- White
- Black Sand

**Al<sup>13+</sup> Flat Pyramid Post Cap**

**Sold in any quantity.**

Al<sup>13+</sup> - 3" Flat pyramid cap.

- Item #: 51500041 - White
- Item #: 51500048 - Black Sand (Textured)



Available in:

- White
- Black Sand

**Al<sup>13+</sup> Aluminum Cap Rail Clip**

**Sold in bags of 4.**

Clips allow for a clean, smooth attachment of wood or composite cap rails to the top of Al<sup>13</sup> panels. Clips are recommended every 2' along the rail. Includes screws.

- Item # 51500071 - White
- Item # 51500078 - Black Sand (Textured)



Available in:

- White
- Black Sand

**Al<sup>13+</sup> Touch Up Paint**

**Sold in any quantity.**

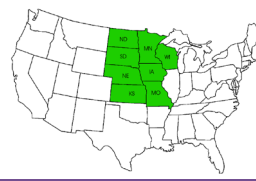
Available in two convenient sizes.

**Spray Can**

- Item # 660371 - White
- Item # 660378 - Black Sand

**Paint Pen**

- Item # 660361 - White
- Item # 660368 - Black Sand



**ACTUAL FREIGHT CHARGES APPLY TO FORTRESS® RAIL ORDERS**

**Fortress® AI<sup>13+</sup> Gate Kits**



Available in:

- White
- Black Sand

**AI<sup>13+</sup> Aluminum Gate Uprights**

**Sold in Pairs.**

Fortress AI<sup>13</sup> welded Aluminum gate uprights. Simply trim panel to size (not included), then install uprights and secure. **Rail panel, hinges and latch sold separately.**

**36" Rail Height (34")**

- Item # **51534051** - White
- Item # **51534058** - Black Sand (Textured)

**42" Rail Height (40")**

- Item # **51540051** - White
- Item # **51540058** - Black Sand (Textured)

Ex: Completed Gate Kit



Available in:

- White
- Black

**Gate Hinge Set with 1" Legs**

**Sold in pairs.**

Self closing tension adjustable, Nylon gate hinges with 1" legs. Maximum self-closing weight of 55 lbs. Includes screws.

- Item #: **WHITENYLHINGE** - White
- Item #: **BLACKNYLHINGE** - Black



Available in:

- White
- Black

**Gate Latch**

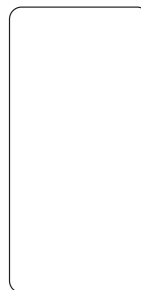
**Sold in any quantity.**

A quality and affordable latch for general-purpose gates. Combines the unique benefits of key-lockability and reliable latching action with superior design and rust proof components. Fits square posts. Includes screws.

- Item #: **WHITELATCH** - White
- Item #: **BLACKLATCH** - Black



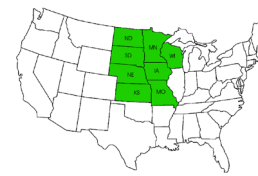
Black Sand



White

Colors shown are an approximate representation only, please see actual product sample when selecting color

**RED item numbers denote NON STOCK special order. Please allow for 3 week lead time.**

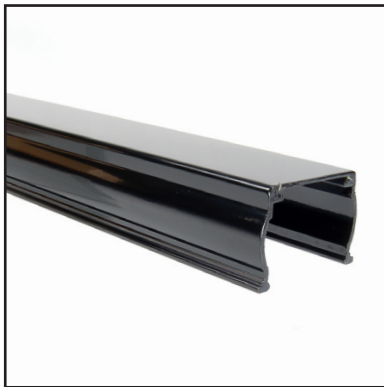


**ACTUAL FREIGHT CHARGES APPLY TO FORTRESS® RAIL ORDERS**



Fortress® Accent Top Rail - White

**Fortress® Al<sup>13+</sup> Colonial Accent Top Rail**



Available in:

White

Black Sand

**8' - Al<sup>13+</sup> Colonial Flat Aluminum Accent Top Rail**

**Sold in any quantity.**

Adds an additional architectural design element to Fortress Al<sup>13+</sup> panels, comes in 8' length only. **Requires use of Evolve P2 Brackets.** Measures 93"L x 2"W x 1-3/8"H.

Item # **51400931** - White

Item # **51400938** - Black Sand (Textured)



Available in:

White

Black Sand

**Al<sup>13+</sup> Evolve P2 Bracket - Level / Angle / Miter**

**Sold in bags of 4.**

Attaches under top and bottom rails for level, straight or LH/RH miter applications. Includes screws for wood and metal applications.

Item # **51500611** - White

Item # **51500618** - Black Sand (Textured)



Available in:

White

Black Sand

**Al<sup>13+</sup> Evolve P2 Bracket - Stair**

**Sold in bags of 4.**

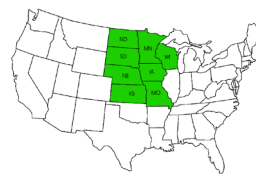
Attaches under top and bottom rails for stair applications. Includes screws for wood and metal applications.

Item # **51500711** - White

Item # **51500718** - Black Sand (Textured)







ACTUAL FREIGHT CHARGES APPLY TO FORTRESS® RAIL ORDERS

**Fortress® Al<sup>13+</sup> Accessories**



Available in:

White

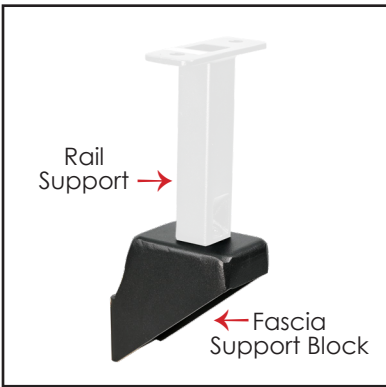
Black Sand

**Al<sup>13+</sup> Aluminum Rail Support**

Sold in any quantity.

3-3/4" Rail support provides additional support at mid-span of rail. Includes screws.

Item # **55535001** - White  
Item # **55535008** - Black Sand (Textured)



Available in:

White

Black Sand

**Al<sup>13+</sup> Fascia Mount Rail Support Block**

Sold in any quantity.

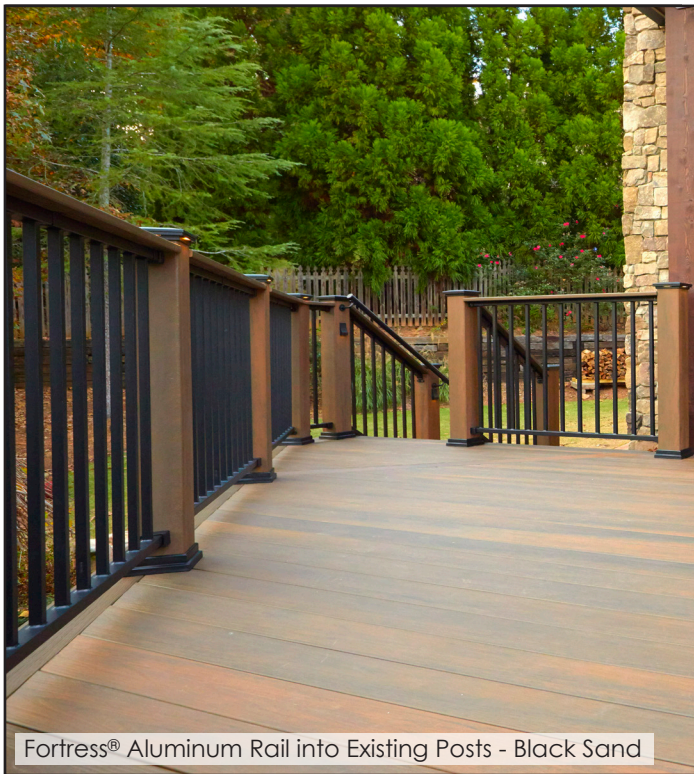
3-3/4" Support block provides support at mid-span of railing for fascia mount applications. Includes screws.

**Fascia Support Block:**

Item # **53503031** - White  
Item # **53503038** - Black Sand (Textured)

**3-3/4" Rail Support**

Item # **55535001** - White  
Item # **55535008** - Black Sand (Textured)



Fortress® Aluminum Rail into Existing Posts - Black Sand



Fortress® Aluminum Rail - White